

Freedom to work  
anywhere, anytime

Enterprise Mobility from O<sub>2</sub>



more  
for you O<sub>2</sub>

## Secure, managed, anytime working

Free your workforce and mobilise your organisation with smart, secure technology. Our Enterprise Mobility and Managed Services provide everything from network connectivity to secure device management and custom apps so your people can work securely anywhere, anytime.

**Freedom to work** ..... Secure your data and network  
**anywhere, anytime** ..... and keep everything under control  
Boost employee empowerment  
and increase productivity

## Smarter flexibility

The pace of change has accelerated in many markets over the past year. Now, change is the new normal. Flexibility is key to success – and even survival. Organisations must be able to react quickly and effortlessly to changes in customer demands, new competition, and political and economic pressures.

Enterprise Mobility from O<sub>2</sub> is a series of end-to-end solutions designed to look at working preferences and your organisation's structure to develop a mobile strategy. We'll help you build a solution that works for your business and provide new, smarter ways to engage and collaborate with customers and employees. By putting people first, we'll enable you to:

### **Protect your data**

By defining policies and implementing robust Mobile Device Management solutions, and applying network access controls.

### **Secure your devices**

By surrounding your devices with next gen cyber security protection with always-on, always-up-to-date Capsule Secure Mobile from O<sub>2</sub>.

### **Increase employee agility and productivity**

By giving your people the freedom to work, whenever and wherever they want.

### **Reduce costs**

By improving employee productivity and managing data use with one supplier, creating appropriate use of devices and consolidation of contracts.

## Take a closer look at Enterprise Mobility

We think there are a few things to think about:



### **Mobility and device strategy**

Look at what devices people currently use to access your network. Put your people at the centre and consider your current policies (e.g. bring your own device – BYOD), which operating system is best, as well as when and where your people need to work.



### **Mobile Device Management (MDM)**

Once you know how you'll manage devices, you need to consider the data stored on them and secure it, deploy updates and control the access of apps. You'll also need to think about how to distribute corporate content and keep on top of costs as more people upload and download content remotely.



### **Managed access to corporate networks**

It's not just devices you need to protect. Your organisation's data is also under threat as it travels across the network. And as more people use the network from remote locations, its performance and pervasiveness could suffer.



### **Real-time protection**

You should all consider how to protect your devices in real time. Complementing MDM with real-time protection will allow effective malware protection, and protection against malicious data going in or out of any device. Enjoy the flexibility to create unique security and compliance policies for different thresholds, individuals, or groups of users.



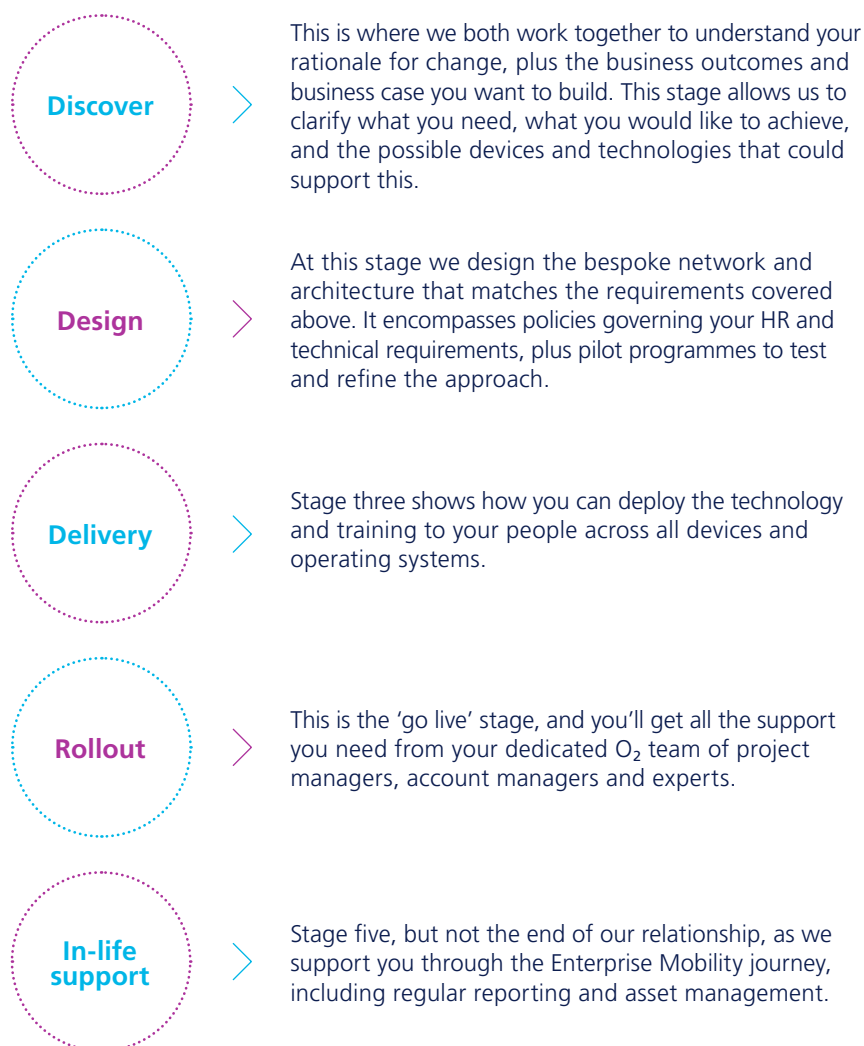
### **Mobile applications**

Apps are central to employee productivity and engagement levels – and are central to how your customers buy products and receive services. Consider how you deploy apps across your organisation and how you should develop bespoke apps for your business.

## And take our end-to-end approach

Our approach to planning and rolling out Enterprise Mobility has been tried and tested across countless implementations, in both the private and public sectors. It follows a number of simple, transparent stages run by a dedicated team and underpinned by full governance and regular meetings.

There are five stages, each designed to ensure that any solution suits your organisation's needs exactly:



## Why O<sub>2</sub>?

At O<sub>2</sub>, we have a strong mobile heritage – it's at the core of everything we do. We're ideally placed to help you put mobility at the heart of your organisation. We've done it ourselves and we're still adding up the benefits – to our culture, work environment and bottom line.

It's about simplicity, agility and innovation, not jumping through technological hoops. It's about liberating people so they can communicate from anywhere and at any time. And that's why we know that business isn't technology or mobile first. At O<sub>2</sub>, we know change is happening, fast – and we put people at the core of it.

Organisations need new and smarter ways to engage with customers, improve the way they operate and help their people deliver amazing services and products. Once we understand how people work, we look at the security, policies devices, apps and other tools that can support them. This flexibility leads to faster reactions – to changes in customer demands, to new competition, to political and economic pressures. And it's here that O<sub>2</sub> helps provide more for you:



### More flexibility

IT and flexibility haven't always gone hand in hand. Lengthy contracts and complex systems have tied IT managers to legacy infrastructure which hinders business transformation. That's not true of O<sub>2</sub>. We give you solutions that adapt to meet the needs of your business, and are flexible in our approach.



### More agility

Our solutions offer greater organisational agility: how your people collaborate with each other, how they access the information they need securely at any time and how they can communicate with you.



### More management

Our mobile device management solutions cover all standard devices and platforms. You don't need separate management for different operating systems. We can do remote wipe, mobile application management, and quick and effective user authentication. And we'll complement it all with more security.



### More trust

You can enjoy added peace of mind too as we're still the only network provider to have CAS(T) certification for mobile and WAN services. So we're the only network provider that can guarantee our customers that we meet all the security measures as required by CAS(T), independently verified on an annual basis by an appointed Lloyds auditor (LRQA) to government security standards.



### More straightforward

You can use off-the-shelf or build your own apps that adapt and scale with your needs, no matter what devices your people want to use. Our mobile application platform is a cloud-based service that makes it easy for developers to build apps that run on different operating systems. Providing faster, cheaper rollout, lower support costs and easier, quicker responses to changing organisational needs.



### More opportunity

Our IT delivery model is centred on O<sub>2</sub> Gateway, the UK's first (and still the only) fully integrated network. We've converged together three different transport mechanisms – mobile, fixed and wifi – and created a truly converged platform, which gives you access to new services in days rather than months. You can enjoy a seamless experience however you connect to your network, and just one end-to-end SLA.



### How MDM helped ISS improve customer responsiveness

ISS manages the everyday running of its customers' premises. This means it needs to respond quickly and accurately to customer needs – something that was causing difficulties across the business. We put forward an MDM solution for around 5,000 devices. This allows ISS to have better control over its full estate of devices. It can deliver updates efficiently and, with better control and improved security, it's made the user experience significantly better – boosting productivity rates.



### Using mobile helped MDG manage reports quickly and securely

MDG has a network of over 400 nurses spread across the UK and Ireland. It needed a mobile solution that was user-friendly, minimised manual work and only gave nurses access to its own app and email. O<sub>2</sub> provided customised iPads with mobile device management. It meant that a report that would usually take two or three days to complete can now be completed within 20 minutes of a visit. It's also increased customer confidence, created more central control over devices and provided better security for confidential data.



## Arrange a Discovery Session today

We can share further case studies, best practice examples and help you shape your mobility roadmap.

The agenda for your Discovery Session could include:

- Finding the best mobility strategy for you – CYO/BYO/COPE
- Choosing the right devices and operating systems for each user profile
- Managing users, devices and applications
- Controlling access to corporate and public networks – fixed, mobile or wifi – and to back-end systems
- Developing and deploying apps

Talk to your Account Manager or call **01235 433 507** to arrange a workshop